

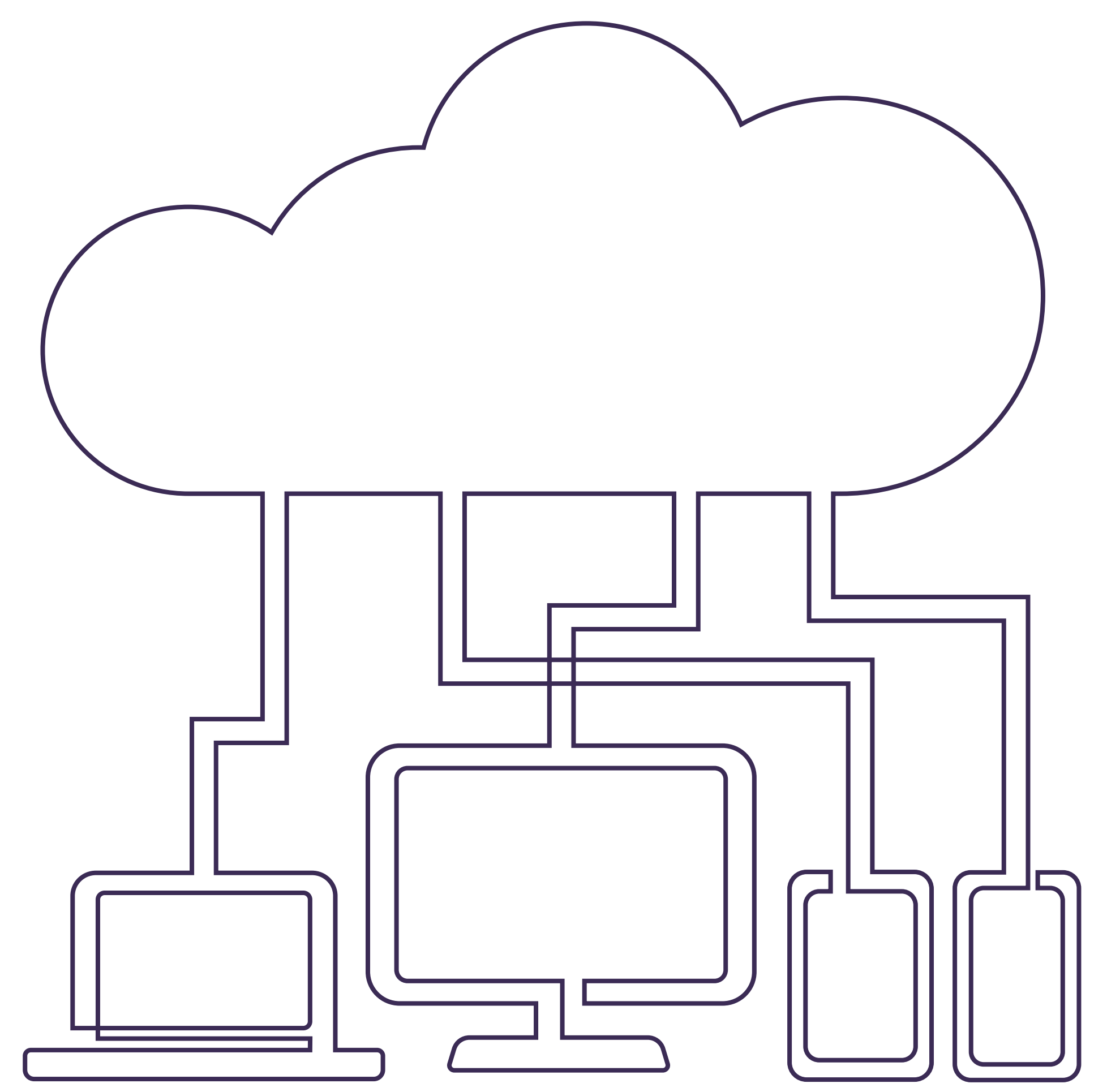
Eight Ways to Drive Value Beyond Scheduling

Challenges with workforce management impact nearly every aspect of clinical operations and almost always require more than a quick fix.

That's why you need systemic, schedule-driven change to bring about tangible results.



- 1 Standardization**
Streamline your IT portfolio and reduce your technology burden.
- 2 Locate & Connect**
Integrate secure communication to build an accurate and dynamic “on-call” source of truth that enables instant system-wide location and connection.
- 3 Access to Data and Analytics**
Use data to make informed business decisions at the practice, hospital, and system levels.
- 4 Reduced Provider Friction**
Improve provider satisfaction by giving them more control over when they work.



- 5 Busting Burnout**
Reduce provider burnout with more equitable schedules that account for personal preferences and can be accessed anywhere, any time.
- 6 Protect Patient Access**
Better align staff resources with patient load to ensure consistent access to high-quality, efficient care.
- 7 Accurate Provider Payroll**
Integrate scheduling and payroll systems to make sure providers receive accurate pay in a timely manner.
- 8 Strong Physician Adoption of Technology**
Empower your change management to get care team members on platform and using the new technology.

Contact us today to see how PerfectServe can alleviate your workforce management issues with technology that builds the best possible schedule every time, no matter the complexity involved.

Discover the Benefits of Better Schedules